

# Dense Breast Tissue

George Washington University Medical Center - Washington, D.C.

## Breast-Specific Gamma Imaging with the Dilon 6800

### Clinical History

Healthy premenopausal patient presenting with palpable mass in left breast.

### Mammogram

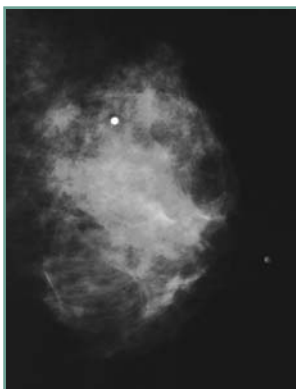
Left breast: moderately dense fibroglandular tissue, without clear correlation to palpable mass. No change compared to mammogram 1- year prior. BIRADS 4.

### Breast-Specific Gamma Imaging

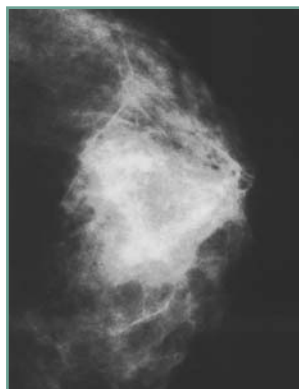
Left breast: lateral view demonstrating very small high intensity foci in the posterior aspect of the breast slightly superior to the nipple line. Foci also noted in the CC view near the lateral edge of the image. Suggestive of carcinoma: POSITIVE.

### Histopathology Findings

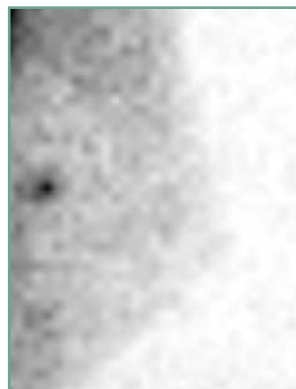
Infiltrating mammary carcinoma.



LMLO mammogram



LCC mammogram



LMLO BSGI



LCC BSGI

Because BSGI images independent of tissue density, it has proven useful in the evaluation of patients with fibroglandular densities.

